



# BURUNDI INVESTMENT BENEFITS FROM THE NILE BASIN COOPERATION







ONGOING CONSTRUCTION AT THE REGIONAL RUSUMO FALLS HYDROELECTRIC PROJECT

## ABOUT THE NILE EQUATORIAL LAKES SUBSIDIARY ACTION PROGRAM (NELSAP)

The Nile Equatorial Lakes Subsidiary Action Program Coordination Unit (NELSAP-CU) headquartered in Kigali, Rwanda, is one of the two investment programs of the Nile Basin Initiative (NBI), the other being the Eastern Nile Subsidiary Action Program (ENSAP), headquartered in Addis Ababa, Ethiopia known as Eastern Nile Technical Regional Office (ENTRO).

NELSAP-CU was established in December 1999 by the Council of Ministers for Water Affairs with a mission to “contribute to the eradication of poverty, promote economic growth, and reverse environmental degradation in the Nile Equatorial Lakes (NEL) region, within the overall NBI’s shared Vision of sustainable socioeconomic development and the equitable use of and benefit from Nile Basin water resources”. NELSAP-CU is governed and reports to the Council of Water Ministers from 10 Nile Basin membership states of Burundi, DR Congo, Kenya, Rwanda, Tanzania, Uganda, Egypt, Ethiopia, South Sudan and Sudan.

NELSAP-CU within its mandate facilitates jointly agreed transformative in-country projects with regional impact/significance and trans-boundary cooperative investment projects related to the common use of the Nile Basin water resources. It also builds regional capacity of countries and provides a platform for implementation coordination

of trans-boundary investment projects. NELSAP-CU renders support to national initiatives and focuses on two investment areas of: (i) power development and trade; and (ii) natural resources management and development.

NELSAP-CU has prepared a number of cooperative in country and regional trans-boundary projects, which are at various levels of preparation and implementation. NELSAP-CU mobilized USD 557.107 cumulative finance to-date for pre-investment programs of and additional USD 493.018 Million for investment projects.

Since 2004, NELSAP-CU has gained regional experience, strengthened its capacity and emerged as a reliable regional institution for facilitating key in country and regional investment projects in the Nile Equatorial Lakes Region and beyond. Its key institutional strength lies in project pre-investment feasibility studies, regional projects coordination support, regional strategic analysis, environmental aspects, social economic development, stakeholders’ engagement and development communication, financial and procurement management as well as results based monitoring and evaluation.

NELSAP-CU, in delivering on its mandate, is supported bilaterally and multilaterally by different development





NELSAP IS WORKING ON A NUMBER OF TRANSMISSION LINES INTERCONNECTING THE NEL COUNTRIES

partners including, but not limited to, the World Bank, the African Development Bank (AfDB), the Canadian International Development Agency (CIDA), the Governments of Norway (NORAD), Swedish International Development Cooperation Agency (Sida), the Government of The Netherlands, the Japan Bank for International Cooperation

(JBIC), Japan International Cooperation Agency (JICA), GIZ (Germany), French Development Agency (AFD), European Union (EU) and KfW (Germany). NELSAP-CU work has provided direct and indirect benefits to Burundi since 2004 as elaborated below.

## COMPLETED PROJECTS WITH DIRECT BENEFITS TO BURUNDI

### **Regional Agricultural Trade and Productivity Project (RATP 2009-2012) USD7.0 Million**

The rationale of the project was to ensure reliable access to water, strengthened market linkages and active promotion of private sector as options that can have a dramatic impact on agriculture growth, food security and poverty reduction across the NEL countries.

The project was implemented in collaboration with regional economic communities COMESA and EAC. Under the project, the following studies were completed: (i) development of the Nile Basin agricultural model, (ii) assessing the irrigation potential in 7 NEL Countries (Burundi, DRC, Rwanda, Kenya, Sudan, Uganda, Tanzania), (iii) promotion of best practices on water harvesting and irrigation practices, (iv) cross border agricultural trade studies focusing on trans-boundary grain/pulses trade, livestock trade in the Nile Basin region (v) virtual water/water footprint analysis,

documentation and awareness creation as well as (vi) definition of the NBI agricultural role, based on study of River Basin Organization lessons, national and regional consultation

### **Integrated Management of Trans-boundary Water Resources of Lakes Cyohoha, Rweru and Akanyaru Marshland Project (2010 - 2012)**

The Integrated Management of Trans-boundary Water Resources of Lakes Cyohoha and Rweru and Akanyaru Marshland project (abbreviated in French as GIRET Project) was financed by the Bank through African Water Facility of the African Development Bank to the tune of Euro770,000. Project results are: i) Integrated Management and Development Plans (IMDP) for the three water resources and Investments Profiles (IP); ii) a Diagnostic Analysis with an environmental screening of the water-resources; iii)



ENERGY MINISTERS OF BURUNDI, RWANDA AND TANZANIA VISIT RUSUMO PROJECT

two hydro-metric stations operational and mechanisms for data collection and sharing of the shared water resources established; iv) 40 local key actors trained in fishery management and policy, environment and IWRM principles and law implementation.

### The Kagera River Basin Management (RBM) Project

The Kagera River Basin Management (RBM) Project, which is implemented in partnership of four countries (Burundi, Rwanda, Tanzania and Uganda), facilitated the installation of hydromet stations in Burundi as follows:

- i) 5 Automatic Weather Stations have been installed at Muyinga, Cankuzo, Karuzi, Gitega, Ruyigi.
- (ii) 6 River Gauge stations were installed at Kibaya (Ruviryonza River), Gitongo (Ruvuvu River), Shombo (Ndurumu River), Murongwe (Mubarazi River) Mubuga (Nyabaha River) and Nyankanda (Kayongozi River).
- (iii) 5 Rain gauge stations were installed at Burasira, Ngozi, Matana, Kabuyenge and Nyakararo. All these enhanced the water resources monitoring in the country.

The Kagera Watershed Management Program,

The programme completed in 2012 a basin-wide watershed characterization, and an Integrated Watershed Management Program, which

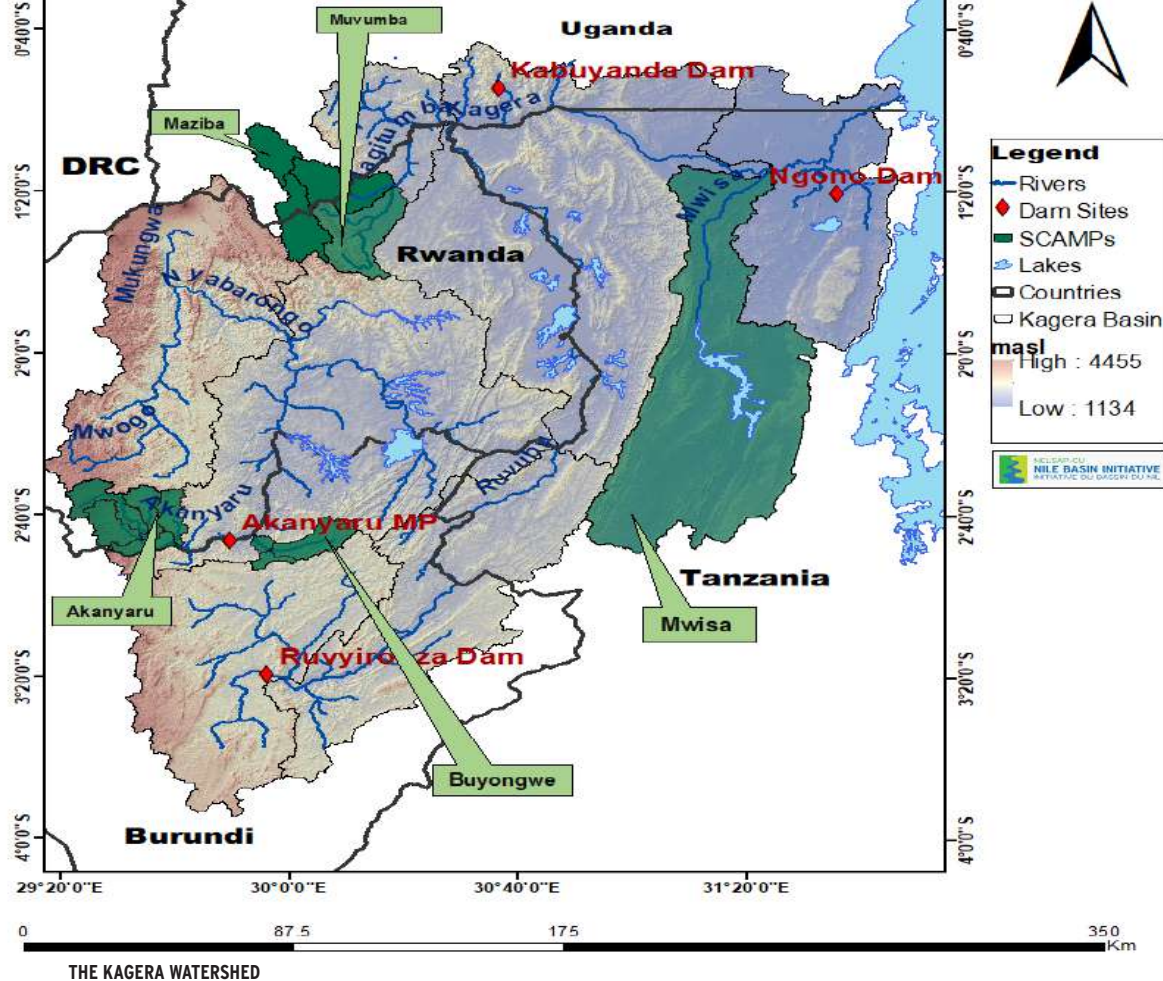
includes a portfolio of “hotspot” watershed and wetland

management projects for rehabilitation. Subsequently, in 2015 Kagera RBM prepared Sub-catchment management/ rehabilitation plans for 4 degraded sub-catchments in the four riparian countries including Buyongwe in Burundi to enhance reversal of environmental degradation.



AN AUTOMATIC WEATHER STATION INSTALLED BY NELSAP





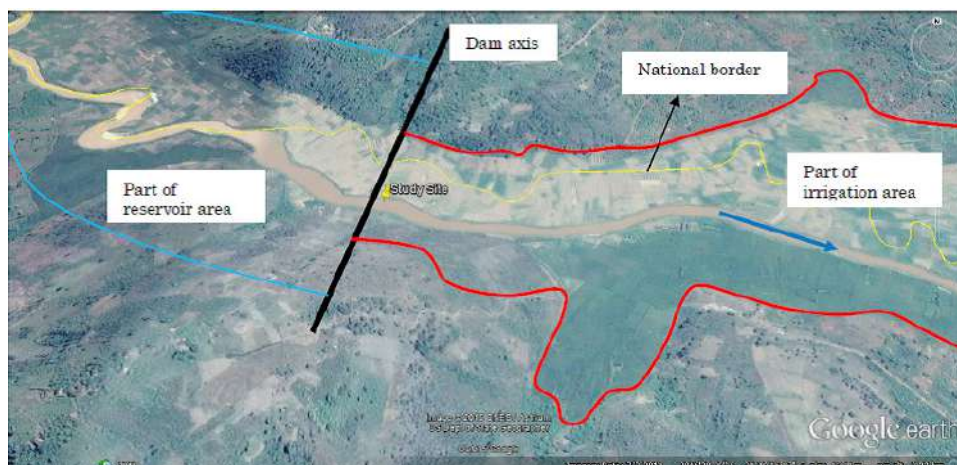
## ONGOING PROJECTS WITH DIRECT BENEFITS TO BURUNDI

### Ruvyironza and Akanyaru Multipurpose Water Resources Development Projects

NELSAP completed the pre-feasibility studies for Ruvyironza and Akanyaru Multi-purpose Dam projects and is now seeking funds from development partners for detailed feasibility, ESIA/RAP studies. The proposed Akanyaru project is envisaged to include a 52 m high dam with storage capacity of 333 Mm<sup>3</sup>, which will expand irrigation by 10,000 ha in Burundi benefiting about 20,000 farmers, supply potable water for about 600,000 people,

and enable hydropower generation of 14.5 MW, and restoration of degraded watersheds upstream of the dam.

On the other hand, the proposed Ruvyironza project is envisaged to include a composite earth fill-concrete dam with storage capacity of 266 Mm<sup>3</sup>, which will expand irrigation by 14,674 ha, and enable hydropower generation of 22 MW, provide food for about 124,740 people, and enable hydropower generation of 14.5 MW (supply power to 846,000 people), water supply, and restoration of degraded watersheds upstream of the dam.



MAP SHOWING LAYOUT OF THE PROPOSED AKANYARU PROJECT

### Bugesera Integrated Water and Irrigation Project (Rwanda-Burundi)

NELSAP Identified the project potential whereby 42,000 farmers; 50,000 fisher families; 4,500 households involved in alternative income generating activities. NELSAP developed an Integrated Management and Development Plan, which includes: Agricultural Development -- irrigation of





4,200 ha of land; distribution of dairy cows; Catchment management -restoration of 765 ha or banks and lake shores, and 5.5 million agro forestry and fruit trees; Fisheries resources development and management, including 4 community based fish hatcheries, and fishermen cooperatives.

### **Interconnection of Electric Grids of the Nile Equatorial Lakes Countries Project**

The project's total transmission line is 927km at 220kV and 400kV with associated 17 sub-stations. The project involves five countries of the NEL region; Burundi, DR Congo, Kenya, Rwanda and Uganda aims at strengthening the interconnections between NEL region countries and other regional electric grids at the total cost of US\$415 Million from different financiers (AfDB, Government of Japan JICA, Government of Germany (KfW), the Government of the Netherlands and the European Union and Sida. Project implementation is on-going in all the five countries with the following scope involving Burundi:

**Bujumbura - Kamanyola Transmission Line:** Procurement of supervision consultant was completed in March 2017. Design works completed and currently under implementation, to be completed in December 2019.

**The Kigoma (Rwanda)-Gitega (Burundi) Transmission Line:** Procurement for Rwanda scope was completed contract signed and design work commenced. Mobilization of funds with the African Development Bank, AfDB for Burundi in progress and the line will be completed in February 2020



**NELSAP will supervise construction of power Substations in Ngozi and Gitega (Burundi) for Euro 6.79M AfDB funding. The project is currently under appraisal**

### **Regional Rusumo Falls Hydroelectric Project (RRFHP)**

The Regional Rusumo Falls Hydroelectric Project, under implementation with an installed capacity of 80 MW (Run of River Scheme at 1320masl) shared equally among Burundi, Rwanda and Tanzania. The power generation infrastructure will be located at Rusumo Falls at the border of Tanzania and Rwanda.

The transmission lines will extend from the power generation plant to Gitega in Burundi, Kigali in Rwanda, and Nyakanazi in





ONGOING CONSTRUCTION AT THE REGIONAL RUSUMO FALLS HYDROELECTRIC PROJECT

Tanzania. The project will develop renewable hydroelectric power as part of a broader program to support sustainable management of the Kagera River Basin and promote growth and poverty reduction. NELSAP is implementing the Hydropower Project on behalf of the three countries. This will provide more electricity to three countries. The project upon completion will facilitate increased economic activities, private sector development, and investments in social infrastructure and services through improved access to electricity.

The project has two components: i) A hydroelectric power generation plant at the Rusumo Falls of -80MW capacity to be shared among the three countries, ii) Transmission lines connecting the hydroelectric generation plant of Rusumo Falls to the national grids of Burundi, Rwanda and Tanzania, and the related project area development.

The setting up of the Special Purpose Vehicle (SPV) the Rusumo Power Company Limited (RPCL) is complete. US\$340Million and US\$128Million have been advanced to the countries as loan/grant from the World Bank and African Development Bank for the implementation of the Regional Rusumo Falls Hydroelectric Project and the power transmission lines respectively, which commenced in 2014.

### Completed Activities

The project is now at the implementation phase having completed Environmental Baseline Studies which included Fish Baseline Survey, Spray Zone Biodiversity Survey and Water Quality Baseline Survey.

- Civil works, supply and installation of hydro-mechanical and Electro-Mechanical equipment ongoing since 2016.

- The 80 MW dam will be commissioned in 2020 and it will provide 26MW of electricity to the Government of Burundi among others.

### Local Area Development Plan (LADP)

As part of bringing quick benefits to the community around the project site, NELSAP supports the Local Area Development Plan (LADP) as a benefit-sharing program worth 15 Million US Dollars designed to enhance regional economic and social development in the Rusumo area as an extended program related to the construction of the project. LADP is expected to improve community livelihoods and promote socially sustainable outcomes of the riparian citizens of the affected districts.

In Burundi, the Regional Rusumo Falls Hydroelectric Project has allocated USD 5million to the people through Busoni Commune (Kirundo Province) and Giteranyi Commune (Muyinga Province) to implement different community development projects (agriculture (crops and livestock) through irrigation, construction of a new health centre, and roads rehabilitation.

Busoni Commune (Kirundo Province) and Giteranyi Commune (Muyinga Province)

Both Giteranyi and Busoni Communes will implement rehabilitation and extension of water supply systems, construction health centers, youth training center, hangars of storage and block office as well as livestock intensification for cows.

In addition, the construction activities at Rusumo has creating 100 job opportunities to Burundians.



# REGIONAL RUSUMO FALLS HYDROELECTRIC PROJECT (RRFHP)



HON. PROF. SOSPETER MUHONGO THE MINISTER OF ENERGY-TANZANIA, HON. COME MANIRAKIZA, THE MINISTER OF ENERGY-BURUNDI AND HON. JAMES MUSONI THE MINISTER OF INFRASTRUCTURE-RWANDA, MEET THE PRESS AFTER RUSUMO FALLS HYDROELECTRIC PROJECT CONSTRUCTION LAUNCH

## PROJECTS IN THE PIPELINE WITH DIRECT BENEFITS TO BURUNDI

NAME AND LOCATION	STATUS	AMOUNT		
Ruviryonza Multipurpose Water Resources Development Project (14,000 Ha) in Gitega Province	Feasibility and ESIA studies ongoing next is detailed design and project implementation	Investment USD 80 million	Ndurumu Valley Irrigation & Water Supply Deployment Project (4,900 Ha irrigation, water supply & flood control) in Karuzi District	Prefeasibility done next is Feasibility, ESIA & RAP, detailed design and project Implementation Pre-investment USD 2.0 mln, investment USD 25 million
Upper Ruvubu Multipurpose Water Resources Development Project (8,000 Ha irrigation, 3.6 MW, water supply to 154,000 people) in Ngozi, Gitega and Kayanza Provinces	Prefeasibility done next is Feasibility, ESIA & RAP, detailed design and project implementation	Pre-investment USD 2.0 mln, investment USD 70 million	BURUNDI, RWANDA, TANZANIA AND UGANDA: Implementation of Kagera Basin-wide Integrated Watershed Program	Feasibility study level next is Design and implementation Pre-investment USD 3.0 mln, investment USD 60 million
Nyamuswaga Valley Irrigation & Water Supply Deployment Project (3,644 Ha irrigation, water supply) in Ngozi District	Prefeasibility done next is Feasibility, ESIA & RAP, Detailed design and Project Implementation	Pre-investment USD 2.0 mln, investment USD 19 million	BURUNDI AND RWANDA: Akanyaru Multipurpose Water Resources Development Project (12,474 Ha; Water Supply 614,200 persons) in Kirundo, Ngozi and Kayanza Provinces in Burundi, and Huye and Gisagara Districts in Rwanda	Prefeasibility done next is Feasibility, ESIA, and detailed design Pre-investment USD 3.5 mln, investment USD 100 million
			BURUNDI AND RWANDA: Integrated Management of Transboundary Water Resources of lakes Cyohoha, Rweru and Akanyaru Marshland Project- In Bugesera Wetlands	Feasibility done next is Project Implementation Investment USD 40 mln.

## STATUS OF INTERCONNECTION OF ELECTRIC GRIDS OF NEL COUNTRIES - FOCUS ON WORKS IN BURUNDI

- **Burundi - DR. Congo** interconnection (Bujumbura-Kamanyola) is at 20%.
- **Burundi - Rwanda** - power interconnection lines: **(Boarder-Ngozi-Gitega)** New funding being sourced.
- **Burundi - Rwanda** - power interconnection lines: **(Kigoma - Butare- Boarder)** Contractor started June 2018, engineering on-going, and construction has started at Butare substation

## ONE RIVER ONE PEOPLE ONE VISION



## CONTACTS

NILE EQUATORIAL LAKES SUBSIDIARY ACTION PROGRAM (NELSAP CU)

KIGALI CITY TOWER, 5TH FL. P. O. Box 6759, KN 81 ST. KIGALI, RWANDA TEL: (250) 788 307 334

TWITTER: @NELSAPCU FACEBOOK: [HTTPS://WWW.FACEBOOK.COM/NELSAPCU/](https://www.facebook.com/NELSAPCU/)

[HTTP://NELSAP.NILEBASIN.ORG](http://NELSAP.NILEBASIN.ORG)