

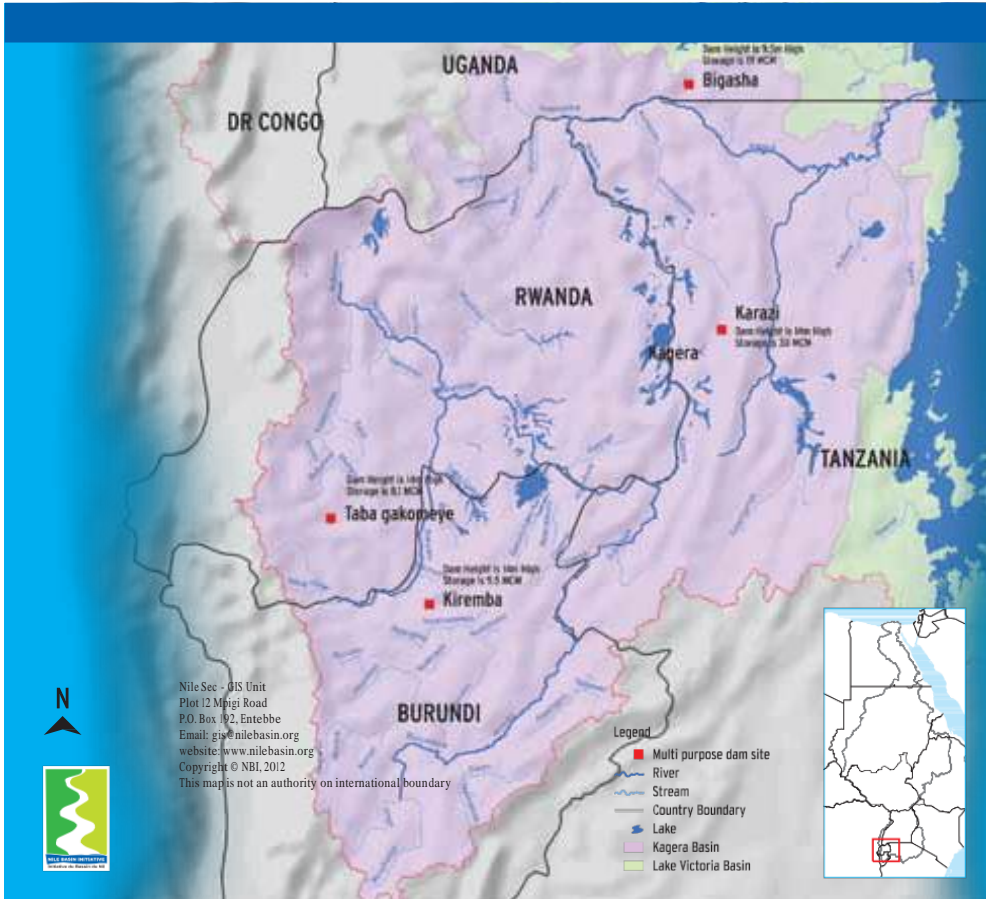


NILE BASIN INITIATIVE NELSAP



Nile
Equatorial
Lakes
Subsidiary
Action
Program

KAGERA RIVER BASIN MANAGEMENT PROJECT



SUB-PROGRAM

Kagera River Basin Management Project

EXECUTING AGENCIES/PARTNER(S)

NBI/NELSAP-CU in collaboration with the Governments of Burundi, Rwanda, Tanzania and Uganda

PROJECT DURATION

2005 – 2012 (Preparation)
2013 – 2017 (Implementation)

BUDGET

Preparation phase: USD 7.57 million (Sida/Sweden and NORAD/Norway), USD 3.77 million World Bank (NBTF)
Implementation phase: USD 5.57 million (Sweden, World Bank (CIWA))

PARTICIPATING MEMBER STATES



The project covers 11 Provinces in Burundi (Gitega, Muramvya, Mwaro, Karuzi, Ruyigi, Kayanza, Ngozi, Muyinga, Cankuzo, Rutana, Kirundo), 25 districts in Rwanda (Rwamagana, Kayanza, Ngoma, Kirehe, Gatsibo, Nyagatare, Bugesera, Muhanga, Kamonyi, Ruhango, Nyanza, Huye, Gisagara, Nyamagabe, Nyaruguru, Gicumbi, Rulindo, Musanze, Gakenke, Burera, Karongi, Ngororero, Kicukiro, Gasabo and Nyarugenge), five districts in Tanzania (Ngara, Muleba, Karagwe, Biharamulo and Misenyi) and four districts in Uganda (Kabale, Isingiro, Ntungamo and Rakai)

PROJECT DESCRIPTION

The Kagera basin which lies within the four countries of Burundi, Rwanda, Uganda and Tanzania, is characterized by low productive peasant agriculture and endemic poverty, severe land degradation linked to loss of soil fertility caused by population pressure and primitive farming methods. The riparian countries rank among the world's poorest countries. Land cover depletion including deforestation is wide-spread with almost total absence of reforestation activities. Soil erosion culminates in increased nutrient load in the river as well as into Lake Victoria, leading to severe problems of water hyacinth and eutrophication. The basin area has insufficient water for household use and for grazing despite the abundant water sources found in the area. Wetlands have been exploited and degraded, and there are cross border migrations of pastoralists which cause conflicts. Despite the challenges, Kagera basin holds significant opportunities for win-win development that could enhance food production, energy availability, transportation, industrial development, environmental conservation and other related sustainable development activities. Cooperative water resources management offers unique opportunities as catalysts for greater regional integration both social-economic and political with potential benefits exceeding those derived from the river itself. This requires a basin-wide approach to management through a framework for sustainable transboundary development and management of the water resources.

OVERALL OBJECTIVE

To establish a sustainable cooperative framework for the joint management of the water resources of the Kagera River Basin; in order to prepare for sustainable development oriented investments that will improve the living conditions of the people while protecting the environment.

SPECIFIC OBJECTIVES

- i. Establish a sustainable cooperative framework for joint management of the shared water resources of the Kagera River Basin
- ii. Strengthen capacity of relevant riparian actors at all levels for sustainable management and development of Kagera River Basin.
- iii. Contribute towards enhanced knowledge-based river basin planning through development and utilization of analytical tools
- iv. Identify, prepare and advance investment projects to pipeline status through feasibility type studies, in order to improve water, food and energy security
- v. Support the countries in resource mobilization for implementation of the prepared investment projects

IMPACT STATEMENT

The Kagera River Basin Project contributes to the improvement of living conditions of the basin communities through social economic development, poverty reduction and reversal of environmental degradation.

MAJOR ACHIEVEMENTS

- Developed and formalized a cooperative framework to facilitate basin cooperation in water resources
- Developed Kagera river basin monograph, Information database, Basin development plan and Water allocation model, to enhance knowledge-based river basin planning
- Designed an optimal hydrometric network for the basin and installed key hydrometric stations, to improve quality and reliability of data for planning
- Completed basin-wide watershed characterization, and an Integrated Watershed Management Program which includes a portfolio of “hotspot” watershed and wetland management projects for rehabilitation. Subsequently, prepared Sub-catchment management/ rehabilitation plans for 4 degraded sub-catchments of *Giswi-Akanyaru—in Rwanda, Buyongwe–Burundi, Mwisa–Tanzania and Maziba–Uganda*, to enhance reversal of environmental degradation
- Identified and prepared regional water infrastructure projects for multipurpose uses of irrigation, hydropower, water supply, at *Buyongwe–Burundi, Taba Gakomeye–Rwanda, Karazi–Tanzania and Bigasha–Uganda*.
- Conducted targeted capacity building activities through specialized trainings and study tours, for strengthening institutional and technical capacity of the riparian states
- Completed the construction of Butihinda Water supply system in Burundi, Kayanga Water supply system in Tanzania and Katuna Water supply system in Uganda
- Completed construction of 15 Rainwater harvesting tanks for 15 schools in Nyagatare, Rwanda.

- Implemented Agro-forestry projects as follows: Kabarole and Busoni Districts in Burundi; Kirehe, Nyamagabe and Gicumbi Districts in Rwanda; Rulenge and Ngara Districts in Tanzania; Rakai and Ntungamo Districts in Uganda.
- Reviewed and advised on the status of the Kagera River Navigability.
- Facilitated Preparatory activities for inclusion of Rwanda and Burundi in the LVEMP II Program
- Supported Burundi and Rwanda in updating their National water policies
- Supported Rwanda in formulation of TOR for preparing their National Water Resources Master Plan

CONSTRAINTS/CHALLENGES

- Management of high expectation of the basin community for immediate tangible benefits
- Limited human and institutional capacity to effectively execute identified Investment Programs and mobilization of resources for implementation of investment opportunities

LESSONS LEARNED

- Implementation of physical tangible projects provides a good foundation for support and ownership.
- Involvement of stakeholders from the onset of project identification till implementation helps in creating interest, sense of ownership and sustainability of the entire process.

KEY OUTPUTS

- Kagera cooperative framework arrangements (Kagera MOU)
- Kagera Monograph and information database
- Kagera Basin development plan and Water allocation model
- Kagera Capacity building plan, training and study tour reports
- Kagera Gender action plan, and Gender mainstreaming guidelines and checklists for different project types
- Kagera Stakeholder participation plan
- Design and completion reports for Butihinda, Kayanga and Katuna Water supply systems
- Completion reports for Nyagatare water harvesting tanks
- Design and installation completion reports for strategic Kagera regional hydro-meteorological network stations
- Kagera navigability review report
- LVEMP II preparatory study reports for Burundi and Rwanda
- National water policies for Burundi and Rwanda
- Design reports for multipurpose water infrastructure projects at Buyongwe (in Burundi), Taba-Gakomeye (Rwanda), Karazi (Tanzania) and Bigasha (Uganda)
- Feasibility study report and Investment profiles for basin-wide watershed and wetland investment projects
- Management/rehabilitation plans for 4 critically degraded Sub-catchments of Akanyaru (in Rwanda), Buyongwe (Burundi), Mwisa (Tanzania) and Maziba (Uganda)
- Prefeasibility study reports and consultancy contracts to undertake Feasibility studies, detailed design and Independent ESIA and RAP studies for proposed multipurpose WRD projects of *Ruvyironza (22 MW, 14,000 ha – Burundi), Ngono (13,680 ha, 2.5 MW – Tanzania), and Kabuyanda (4,203 ha, 0.1 MW – Uganda)*.

NILE EQUATORIAL LAKES SUBSIDIARY ACTION PROGRAM – COORDINATION UNIT

P.O. Box 6759, Kigali-Rwanda

Tel +250 788 307 334

Email nelcu@nilebasin.org

Mission: To contribute to the eradication of poverty, economic growth, and reversal of environmental degradation in the Nile Equatorial Lakes region

Website: <http://nelsap.nilebasin.org>

