

AKANYARU MULTIPURPOSE WATER RESOURCES DEVELOPMENT PROJECT



FROM LEFT. MTCHERA CHIRWA JOHANNES FROM THE AFRICAN DEVELOPMENT BANK, AFDB (NEPAD-IPPF) RAHEL KABA EBBA FROM AFRICA WATER FACILITY (AWF) MS. MUKARUBIBI FATINA THE RWANDA PERMANENT SECRETARY FOR THE MINISTRY OF ENVIRONMENT, ENG. MARC MANYIFIKA, THE DIRECTOR GENERAL OF LAND, WATER AND FORESTRY AND NELSAP-CU SENIOR STAFF DURING THE AKANYARU PROJECT APPRAISAL MISSION IN RWANDA

THE AKANYARU PROJECT IN NUMBERS

614,200

The project will supply potable water to 614,200 people in Burundi and Rwanda

12,474 HA

The dam will irrigate 12,474 Ha of farmlands in Burundi and Rwanda

14.5 MW

The project will generate 14.5MW HEP which will power 141,111 homes

333,000,000

The dam with a capacity of 333 million cubic metres will serve 846,000 people

ABOUT THE AKANYARU PROJECT

The Akanyaru Multipurpose Water Resources Development Project that will be shared between Burundi and Rwanda is located on the transboundary Akanyaru River. Akanyaru River is part of the Kagera River basin that forms part of the Lake Victoria Basin. The proposed project is located along

the transboundary Akanyaru River which defines the border between the Southern Province of Rwanda and Burundi's Ngozi Province. The project comprises a 52m high dam with storage capacity of 333 million cubic metres that will supply water to 614,200 people and irrigate 12,474 ha directly benefitting 24,948



African Water Facility
Facilité africaine de l'eau
Mobilizing Resources for Water in Africa
Mobiliser les ressources pour l'eau en Afrique



NEPAD-IPPF
INFRASTRUCTURE
PROJECT PREPARATION
FACILITY



NELSAP-CU
NILE BASIN INITIATIVE
INITIATIVE DU BASSIN DU NIL

MARCH 2020

farmers. It will also generate 14.5 MW hydropower which will power 141,111 homes and serve 846,000 people. The project also includes restoration of degraded watersheds upstream of the dam. This project, classified under Agriculture, hydropower, natural resources, watershed management and water supply sectors was identified in 2012 by Rwanda and Burundi with support from NELSAP-CU. NELSAP-CU undertook the detailed identification studies in 2012 with financing from a Sweden-Norway grant. In 2016 NELSAP-CU prepared a Project Concept Note and did a full proposal in March 2018 for funding from the AfDB NEPAD-IPPF. The Akanyaru project is part of the Nile River Basin investment programs prioritized by Burundi and Rwanda. The Akanyaru project was among the transboundary projects that were approved by the Nile Equatorial Lakes Council of Ministries (NELCOM) meeting held in Entebbe, Uganda on 13th October 2015.

BENEFITS OF THE AKANYARU PROJECT

In addition to power generation, water supply and irrigation, the project will contribute to development of other auxiliary water uses such as livestock development, employment creation, flood control environmental protection and watershed management, boosted agricultural production to match the ever increasing human populations and market demand at regional level thereby improving both national and regional food security, social economic development and ultimately poverty reduction.

IRRIGATION COMMAND AREA FOR AKANYARU

COUNTRY	PROVINCE	COMMUNE	AREA (HA)	NO. OF BENEFICIARIES
BURUNDI	KIRUNDO	NTEGA	2,550	5,100
	NGOZI	MARANGARA	3,735	7,470
		MWUMBA	230	460
		NYAMURENZA	1,990	3,980
RWANDA	BUTARE	KIBAYI	2,274	4,548
		MUGANZI	1,695	3,390
TOTAL IRRIGABLE AREA			12,474	
TOTAL NUMBER OF BENEFICIARY FARMERS				24,948

KEY PROJECT DATES

- 2012 - PROJECT IDENTIFICATION BY NELSAP AND COUNTRIES AND PRE-FEASIBILITY BY NELSAP.**
- 2012 - DETAILED PREFEASIBILITY STUDIES UNDERTAKEN BY NELSAP-CU**
- 2015 - NILE COUNCIL OF MINISTERS APPROVE THE AKANYARU MULTIPURPOSE WATER RESOURCES PROJECT**
- 2016 - MONTH OF MAY APPRAISAL OF DAM SITE BY RWANDA AND BURUNDI**
- 2016 - NELSAP PREPARE PROJECT CONCEPT NOTE**
- 2018 - MONTH OF MARCH NELSAP PREPARES FULL PROPOSAL TO AFDB NEPAD-IPPF**
- 2020 - MONTH OF MARCH, FS,DD, TENDER DOCUMENTATION, ESIA, R&CAP, ESMP, EPP**
- 2022 - MONTH OF MARCH EXPECTED CONCLUSION OF PROJECT STUDIES.**

PROJECTED WATER SUPPLY FROM AKANYARU PROJECT

COUNTRY	PROVINCE	COMMUNE	NO. OF BENEFICIARIES
BURUNDI	KAYANZA	KAYANZA	77,324
	KIRUNDO	NTEGA	76,160
	NGOZI	BUSIGA	55,994
		GASHIKANWA	50,857
		MARANGARA	67,140
		MWUMBA	64,307
		NGOZI	98,551
		NYAMURENZA	51,332
RWANDA	BUTARE	KIBAYI	5,501
		KIGEMBE	16,757
		MUGANZI	16,758
		NDORA	16,759
		NYARUHENGARI	16,760
TOTAL POPULATION			614,200



AKANYARU REGIONAL PROJECT STEERING COMMITTEE (RPSC)

Burundi and Rwanda will formulate a Regional Project Steering Committee (RPSC) which will be composed of Permanent/Principal Secretaries from the Ministries responsible for: Water, Irrigation, Agriculture and Finance in both countries. The RPSC will co-opt other members as needed. The RPSC will act as in advisory role and offer strategic guidance to the project.

The primary responsibilities of the RPSC will be to approve the project work plans, approve the budgets, approve the procurement plans, provide linkages with the relevant national institutions and project cycles to ensure counterpart support to the project, facilitate joint agreements, linkages and reporting to the relevant ministries in the participating countries and coordinate the implementation of the project and its prioritization in the participating countries' National Development Plans (NDPs).

RPSC Chair will be rotational, alternating between the Permanent/Principal Secretaries of both countries on an annual basis.

DAM SAFETY PANEL OF EXPERTS (DSPoE)

NELSAP-CU will form an International / Regional Dam Safety Panel of Experts (DSPoE) comprising of a hydrology expert, geological/geotechnical expert and dam design/construction engineering expert.

The purpose of the DSPoE will be to review and advise NELSAP on matters related to dam safety and other critical aspects of the dam, its appurtenant structures, the catchment area, the reservoir rim, project formulation; technical design; construction procedures; and associated works such as power facilities, river diversion during construction and fish passages. NELSAP will contract the services of the panel, provide administrative support for the panel's activities and arrange for semi-annual panel meetings and reviews, which will continue

through the investigation, design, construction, and initial filling and start-up phases of the dam. After each meeting, the Panel will provide a report of its conclusions/recommendations, signed by the Panel of Expert (PoE) Chair Person. Following the filling of the reservoirs and start-up of the dam and barring significant difficulties, NELSAP will disband the Panel.

PLANNED ACTIVITIES

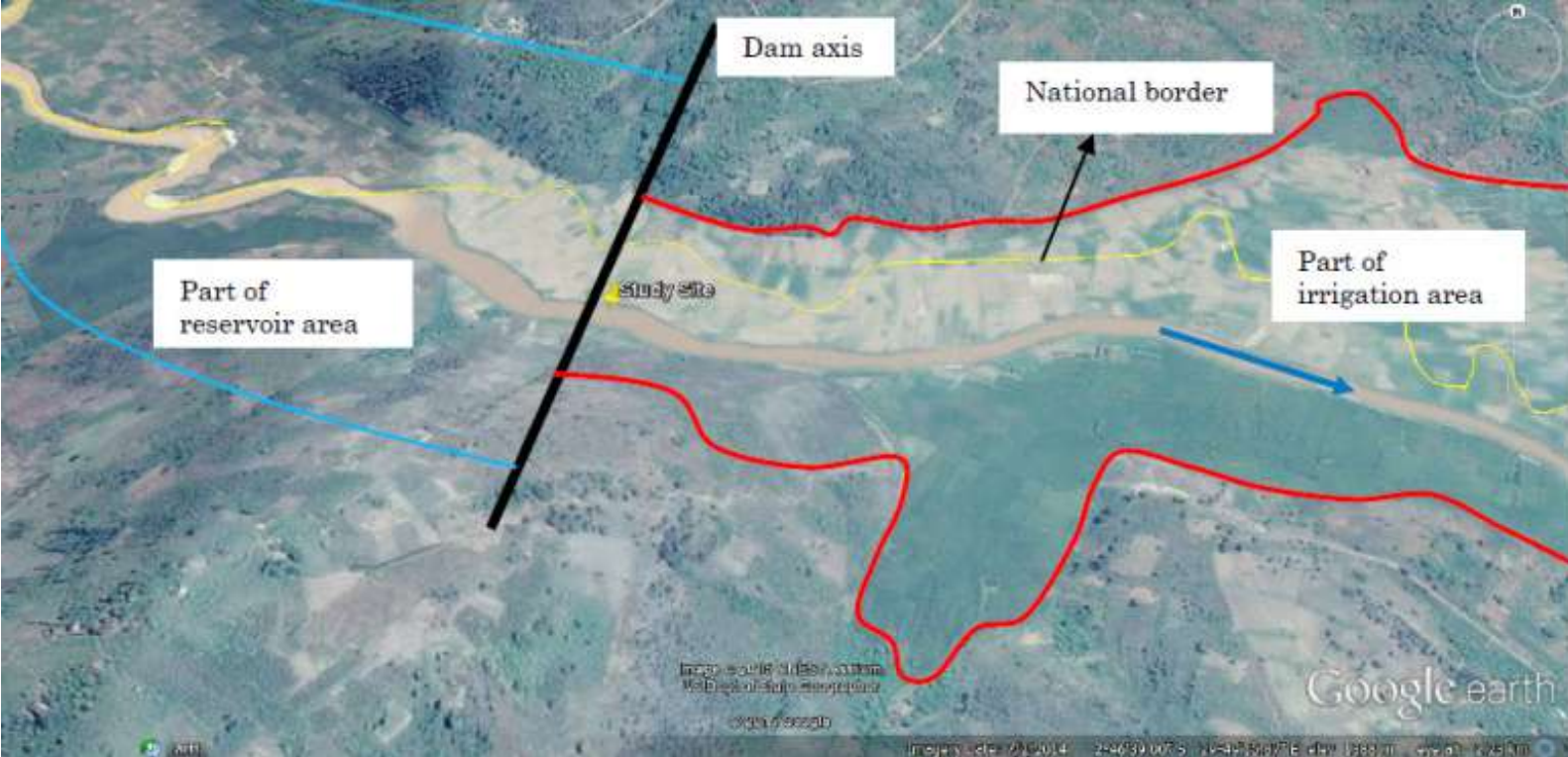
A Preliminary Environmental and Social Impact Assessment was undertaken as part of the Pre-feasibility studies and flagged key issues related to biophysical environmental, socio-economic environment, as well as policy, legal and institutional environment was completed. Other planned activities include;

1. Full Feasibility studies, detailed design and preparation of tender documents for the project.
2. Independent Environment and Social Impact Assessment (ESIA) and Resettlement Action Plan.
3. Creation of a Dam Safety Panel of Experts (DSPoE)
4. Formulation of a Regional Project Steering Committee.

APPRAISAL MISSION BY AfDB/NEPAD-IPPF/AWF

Early November 2019, NELSAP-CU hosted a team from the AfDB NEPAD-IPPF (Infrastructure Project Preparation Facility) and from the African Water Facility (AWF) for an appraisal mission in Rwanda to discuss among others modalities for financing of this project and to get country commitment on the same.

“Rwanda commends NELSAP-CU for following up on this project all the way from identification, prefeasibility and now full feasibility,” said Ms. Fatina Mukarubibi, the Rwanda Permanent Secretary in the Ministry of Environment. She was speaking during the AfDB / NEPAD-IPPF appraisal mission. Speaking during the Nile Equatorial Lakes Council of Meeting (NELCOM) on 29.11.2019 in Nairobi, Hon. Deo-Guide Rurema, the Burundi minister in charge



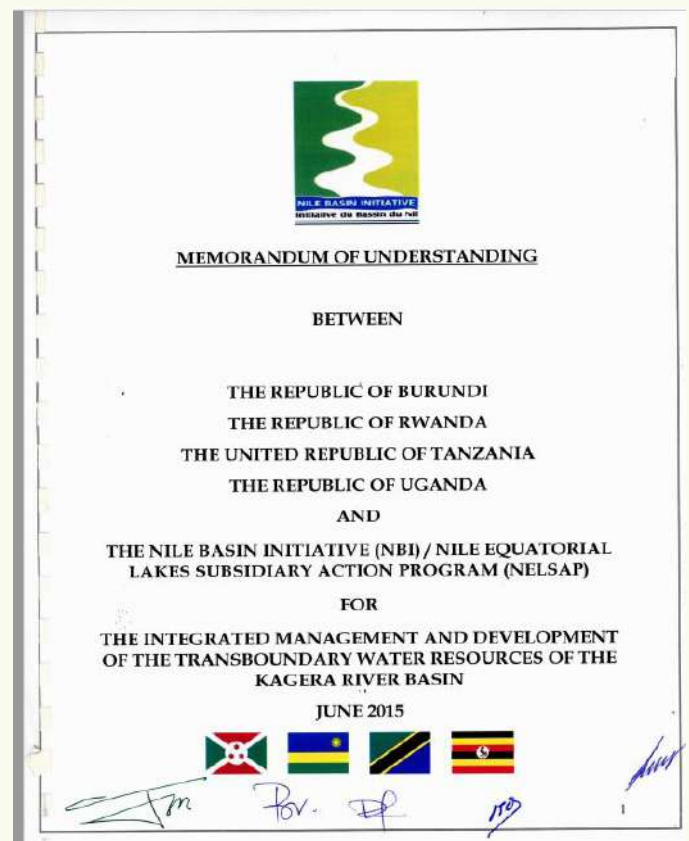
of water affairs, reiterated his country's commitment to the Akanyaru project and confirmed that through coordination of NELSAP-CU the two countries would soon be signing an MOU on its implementation.

“Following review and technical screening of the Akanyaru project, it was found to present a strong case for socio-economic development in the sub-region because it will address food, water and energy security, and contribute to economic development, thus the project is eligible for NEPAD-IPPF and AWF support and has accordingly been included in the 2019 Work Program for preparation,” said Mr. Mtchera Johannes Chirwa, Chief Infrastructure and PPP Specialist from the AfDB's NEPAD-IPPF. Burundi and Rwanda formally mandated NELSAP-CU to prepare the project into full feasibility, and to conduct on their behalf, detailed design, tender documents preparation, environmental and social impact assessment (ESIA) and a resettlement action plan (RAP).

ABOUT NILE EQUATORIAL LAKES SUBSIDIARY ACTION PROGRAM

The Nile Equatorial Lakes Subsidiary Action Program Coordination Unit (NELSAP-CU) headquartered in Kigali, Rwanda, is one of the two investment programs of the Nile Basin Initiative (NBI).

NELSAP-CU was established in December 1999 by the Council of Ministers for Water Affairs in the Nile River Basin, with a mission to “contribute to the eradication of poverty, promote economic growth, and reverse environmental degradation in the Nile Equatorial Lakes (NEL) region, within the overall NBI's shared Vision of sustainable socioeconomic development and the equitable use of and benefit from Nile Basin water resources”. NELSAP-CU is governed and reports to the Council of Water Ministers from 10 Nile Basin membership states of Burundi, DR Congo, Egypt, Ethiopia, Kenya, Rwanda, South Sudan, Sudan, Tanzania and Uganda.



TIME SCHEDULE FOR IMPLEMENTATION - 24 MONTHS FULL FEASIBILITY

BUDGET

US Dollars 2,150,000 for full Feasibility Detailed Designs and Independent ESIA and RAP studies. Full investment cost will be USD 191 million for investment, operation and maintenance for 25 years with corresponding investment cost of USD 7,500 per ha

NILE EQUATORIAL LAKES SUBSIDIARY ACTION PROGRAM (NELSAP-CU)

CONTACT. NILE EQUATORIAL LAKES SUBSIDIARY ACTION PROGRAM (NELSAP CU) KIGALI CITY TOWER, 5TH FLOOR, P. O. Box 6759, KN 81 STREET KIGALI, RWANDA TEL: (250) 788 307 334 TWITTER: NELSAPCu, FACEBOOK: NELSAPCu/

EMAIL: NELSAPCU@NILEBASIN.ORG WWW.NELSAP.NILEBASIN.ORG